

# THE RAINBOW

Box Art Group Newsletter - Monday 27<sup>th</sup> February  
2023

Written by and for the members of Box Art Group (No. 83)

## Contents

- Valley View
- Acrylics
- Winter Scene
- Experimental Tree
- Spring Term Competition
- Notes on Exhibiting
- Green Sea Turtles
- Nearby Events

## Valley View

I did this painting from my sketch and photo after our plain air meeting last year. It was a cold, frosty morning with the mist rising from the valleys. I finally finished it last week. It is my first finished painting for 6 years, in acrylics.

*Ann J*



## Acrylics

I quite enjoy using acrylic paints, but one of the issues is its tendency to dry out fairly quickly when on the palette. This problem may be alleviated to some extent by keeping the palette damp. To achieve this, I use an empty Ferrero Rocher box which has a tightly fitting lid, a couple of paper towels to retain some dampness, and a sheet of greaseproof paper for the paint. It also needs to be kept level.

*Pete*





### Winter Scene

A painting in gouache and gold acrylic ink, showing winter on a hill from Minchinhampton Common down to Stroud. I painted this recently from an old photo I took, but I can't remember which hill it was!

*Hilary K*



### Experimental Tree

This picture results from experimenting with the several different types of Pebeo acrylic inks and liners:

'Moon' transparent, iridescent;

'Vitrail' rich, glossy;

'Prism' makes patterns when mixed with other types;

'Cerne Relief' water-based liners.

First I splashed (carefully) all sorts of inks randomly on to the paper. The 'mess' suggested a tree, so when it had dried, I painted a tree using the liners and wooden stirring sticks from the coffee shop as well as more ink. Puzzle: find the silver bird

*Hilary K*





## Spring Term Competition

(Set by Roxy)



BOX ART GROUP  
Spring Term Competition 2023

# TRAVEL AND JOURNEYS

Spring is (almost) in the air so we could be thinking of getting out and about a bit more.

With this in mind, make a response in any media on the theme of travel and journeys. It is a theme which could take you in many different directions with both subject and media.



The Travelling Companions by Augustus Leopold Egg

If you came on the trip to Birmingham in 2019, you may remember seeing this

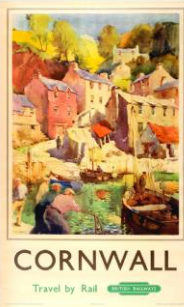
To get started, you could make a list asking yourself how or why people travel or consider journeys you have made or would like to make



The Last of England by Ford Madox Brown



The Great Saint James by Charles Monet



You might like to think about things associated with travel



You might research artists who have made work exploring this theme

Look at

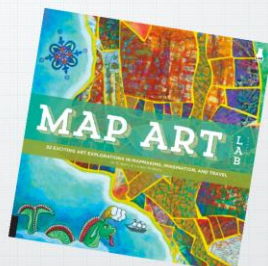
<https://www.tate.org.uk/art/student-resource/exam-help/journeys>

(some of the links in this resource are broken but it has interesting information about some artists and their ideas)

Researching other artists work may inspire a fresh way of working

DAY TO DAY  
CAMP TO CAMP  
WATER TO WATER  
SUMMIT TO SUMMIT  
BOULDER TO BOULDER  
FOOTPATH TO FOOTPATH  
RAINSTORM TO RAINSTORM  
EXPERIENCE TO EXPERIENCE

Richard Long only used words in his "AN EIGHT DAY WALK IN THE CAIRNGORM MOUNTAINS SCOTLAND 2007"



Sonia Delaunay and the poet Blaise Cendrars created a mix of paintings and prose to describe a journey in their book, 'La Prose du Transsibérien et de la Petite Jehanne de France'

You can find out more about this work at:  
<https://www.tate.org.uk/art/artworks/delaunay-prose-on-the-transsiberian-railway-and-of-little-jehanne-of-france-p07355>

Have some fun with it. Perhaps challenge yourself to try something new or revisit something you have produced in the past. Think about new ways of presenting or improving what you have previously done.

Bring your completed work (along with any sketchbook work or photographs if appropriate) to the last session of the term on March 30th

### **Notes on Exhibiting**

Beth presented some notes and examples on how to prepare and exhibit your paintings to best effect during our 9<sup>th</sup> Feb session:-

Hopefully, everyone in the group will be exhibiting at the Box Art Group Exhibition in October, but some members of the group may be considering other ways of showing their work. This is a short guide to exhibiting.

### **Presentation of your work**

Your work needs to be in a frame that compliments it. The mount needs to be the right colour and size.

It is better if your frames are neutral. This usually means natural wood, black or white.

If you are repurposing second hand frames, make sure they fit with current fashion. At the moment, there is little appetite for frames with gold on them. Upcycle by cleaning them, giving them a light sanding and paint them black or white with acrylic or household paint. If you use household paint, you can give them a rub with furniture wax for a soft sheen. Frames from charity shops can be good value, but again will need some upcycling. Frameless canvasses are acceptable for our exhibitions, but check if you are exhibiting elsewhere.

Old mounts can look really tired so replace these if possible.

### **Browser work**

This should be backed with card and wrapped in cellophane, with all details on the back, including the price. If it is presented badly it is unlikely to sell, however good the work.

### **Framing**

I looked at framing an A4 piece of work and got some prices comparisons from online suppliers of real wood frames, see below. It may save money if you limit your paintings to a few standard sizes, with the odd exception for particular subjects.

If you are looking for cheap and cheerful, then The Range and Hobbycraft have the cheapest options.

Online framers will do much the same job as local picture framers. They use acrylic instead of glass. If you are re using the frames, the acrylic can get scratched over time. If so, take the frame along to Roman glass and they will replace with glass for a few pounds.

Online framers come into their own if you are buying more than 10 frames, as the discounts are good. It might be worth getting together with a few people and putting in a bulk order.

## **Making Opportunities**

If you are new to exhibiting you might want to apply to the annual group shows of places like Three Storeys in Nailsworth or Sixteen Gallery in Cheltenham. Some galleries charge a fee for this which is non refundable if you are not accepted.

You might consider getting together with others and booking a gallery for a week. The costs range from £215 at The Lansdown Gallery, Stroud to over £320 per week at the Gardens Gallery in Cheltenham.

You will have to invigilate the gallery for the entire time so it is a big time commitment.

Other places to show your work can be cafes, surgeries, businesses and so on. Woodruffs and Star Anise in Stroud are popular venues and possibly Hobbs house café and the Olive Tree in Nailsworth. You don't normally expect to pay a fee to exhibit but you may have to pay commission on sales.

## **Commission**

Commission can be anything from 10% to 50% plus Vat, depending on where you are exhibiting. Most local commercial galleries are around 30 to 35%, often plus vat. This goes on to the frame cost as well so make sure you price to accommodate this.

## **Online Exhibiting**

There are a lot of platforms for this, Artfinder is one of the best known, as well as Etsy. Costs can be high but you don't have to frame or market your work yourself. There are many free online resources for advice.

## **Advertising**

An online presence like Instagram is good, and you can post on Facebook sites in Stroud like Discover the Artists and Stroud Artistic Community as well. Plus friends and friends of friends.

## **Framing Price comparisons for a wood frame to accommodate an A4 piece of work, including mount.**

**The Range** – wood effect - from £3.49

**Hobbycraft** – wood effect – from £12

**Picframes.co.uk** – solid oak, unfinished - £41.18 delivered

10 frames work out at £31.56 each, delivered

**Eframes.co.uk** - Solid oak, £35.66 delivered

10 frames work out at £24.97 each, delivered

Allow 3 weeks time for the orders to be delivered, but they usually arrive within 10 days.

## **Online mounts**

This is often a cost effective way of getting new mounts if you are buying 10 or more.

**Best4frames.co.uk** 1 x A4 mount £11.54 to include delivery.

10 mounts the same size works out at £4.52 per mount

## **Galleries for hire**

Lansdown Gallery , Stroud, from £215 per week, plus 20% commission on sales

**Three Storeys**, Nailsworth – call them for details

**Sub Rooms**, Stroud – from £248 per week

**Gardens Gallery** Cheltenham, from £320 per week, low season.

For more info ask me on bethjenkinsfyc@hotmail.com

*(Pegasus mount board is £5.50 for an A1 sized sheet.) Beth*



Pete followed up this presentation with a demonstration of the group's mount cutter. This was successful, mainly due to Michael spotting my deliberate mistake. The mount cutter is a group resource, so anyone can use it, and if you want some guidance, please ask Pete or Michael. You will need a cutting board, which is something the group could buy. *Pete*

### **Green Sea Turtles**



This picture is a continuation of my interest in patterns in nature (pebbles/reptile scales etc) and I thought we could all do with a reminder of tropical beaches and the animals found there. The foreground turtles are hopefully realistic but I've abstracted the shapes found on the turtles' shells to make the background more interesting. I didn't get the colours quite right but will hopefully remind you of lovely holidays in the past! (In watercolour.)

*Richard*

### **Nearby Events**

#### **Discover the Artist**

This is a note to Jill about a charity event in which she took part a few years ago:

Thank you so much for taking part in Nailsworth Rotary Club's 'Discover the Artists' event held in August 2018. With your support, and that of over 150 artists, we were able to raise over £6,000, of which £3,100 was distributed to the local arts community. Projects included "Doodle Days", Gloucestershire Young Carers Art Project (where, at the end of the course, all materials were given to participants for their own use), "Leave Stay" Exhibition at Three Storeys, "The Outposted Project", which was designed to support artists during Lockdown, the Nailsworth memorial plaque walk leaflet and other projects. A further £3,100

was shared amongst charities which Rotary supports, for example ShelterBox international disaster relief, End Polio Now, Stroud Food Bank and Great Western Air Ambulance.

We really appreciated your support then, and we are contacting you to ask if you would be kind enough to take part in this year's event. We are asking both professional and "up and coming" artists if they would donate an original A5 (6ins x 8ins or 148mm x 210mm) piece of work signed by the artist on the back – to keep it a mystery. The works will be photographed and displayed on our website, Facebook and Instagram accounts with publicity about our participating artists. The artwork will be exhibited at The Stroud Subscription Rooms on Friday 25th August and the morning of Saturday 26<sup>th</sup> August, after which they will be sold at a price of £45 each on a first come, first served basis. Last time we had prospective buyers queuing all morning!

The purchaser will only find out who has produced the piece of work after they have purchased it – hence "Discover the Artists". Many of our artists heard from their purchasers in 2018 and others had commissions as a result of taking part in our event. We also publicised a lot of our artists' work online. We intend to split the funds raised 50/50 once again between art projects in the community and Rotary nominated charities. The over 1,500 Rotary Clubs in Great Britain & Ireland volunteer to help local, national and international charitable causes with financial and practical support, getting involved in their local communities and making a difference.

Thank you for taking the time to read this. We understand how busy artists are but hope that you will consider taking part again this year. If you would like to participate please reply to [nailsworthdiscovertheartists@gmail.com](mailto:nailsworthdiscovertheartists@gmail.com) or phone 07490 220 773 and we will send you more information. We look forward to hearing from you again.

With best wishes

*Ken Culham*  
*Joint President*

**On behalf of Rotary Club of Nailsworth**  
**Reg Charity No:1124062**  
**Discover the Artists 2023**  
[nailsworthdiscovertheartists@gmail.com](mailto:nailsworthdiscovertheartists@gmail.com)  
**Website:** [www.nailsworthrotaryclub.co.uk](http://www.nailsworthrotaryclub.co.uk)  
**Facebook:** [www.facebook.com/DiscoverTheArtists](https://www.facebook.com/DiscoverTheArtists)  
**Instagram:** [instagram.com/discovertheartists\\_uk](https://www.instagram.com/discovertheartists_uk)

The detailed information on how to contribute is below:

### **Information for Artists contributing to DISCOVER THE ARTISTS**

Nailsworth Rotary is planning another "Discover the Artists" event for August 2023 in the Stroud Subscription Rooms, following our successful event in 2018. We're asking both professional and "up and coming" artists if they would kindly donate an A5 artwork for sale to the public, who won't know who the artist is! We intend to split the funds raised 50/50 between art projects in the community and Rotary nominated charities.

Keen to help us – you're a star - this is what we would like you to do please:

- Donate an original A5 (6ins x 8ins or 148mm x 210mm) piece of art signed by you on the back – to keep it a mystery. Please add your email address and website, if you have one, to the back of your art work too, as many artists received emails from those who bought their paintings and some of these positive contacts resulted in further commissions.
- The artwork will be displayed anonymously and we will display your work in a mount on the day of the exhibition so there's no need to frame it.

- Copyright in any artwork is retained by the artist who, by submitting it, gives express permission to Nailsworth Rotary to photograph it to promote the event. We may use this on our website, Facebook and Instagram accounts or to publicise the event in the media, or even an art calendar in the future. If you prefer not to give permission for us to do any of these things please tell us straight away.
- Let us know how you would like your name displayed in our publicity please – we want to get it right!
- Donated artwork should be with us by **Tuesday 1<sup>st</sup> August**, but preferably sooner please so we can publicise it beforehand, and sent to this address:  

**Frank B King,**  
**Westways, Private Road, Rodborough Common, Stroud GL5 5BT**

 We may be able to arrange collection if you are local.
- Purchasers will be encouraged to contact their artist(s) after the sale to say “thank you”. In the unlikely event your artwork remains unsold after the event, Nailsworth Rotary reserves the right to sell or auction it in whatever way would generate most charitable funds. Please let us know if you want your work returned in this eventuality.
- All the donated artwork will be available to view on our social media before the event, and then exhibited at The Stroud Subscription Rooms on **Friday 25th August** and the morning of **Saturday 26<sup>th</sup> August**, after which they will be sold at a price of £45 each on a first come, first served basis. If you are able to come along, please do as we’d love to thank you in person for your support.
- Let us know if you have a website, Facebook or Instagram account so we can follow you and share and publicise your work. Don’t forget to follow us back – details below!
- Please fill in the form at the bottom of this page and return it with your artwork. If you can’t print it off then please put your details on a piece of paper. Thank you

Any questions – please email or phone us. Thank you again for agreeing to take part in this exciting event. We’ll keep in touch as we publicise the event over the next few months and we look forward to receiving your contribution very soon.

With best wishes

*Ken Culham*  
*Joint President*

Please complete and return your details to us with your artwork:

<b>Name of Artist:</b>	<b>Phone Number:</b>
<b>Email Address:</b>	<b>Website/Facebook/Instagram Account:</b>